

## Itinerary 3001

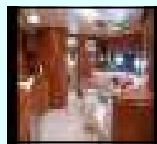
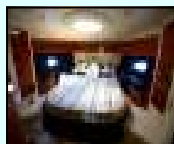
## Charter: Day Dream—Krabi



### Yacht: Sunseeker Predator 60 'MYSTERIOUS WAYS'

Undoubtedly one of the most idyllic beaches imaginable with crystal clear waters with beautiful corals and an abundance of colorful reef fish. Krabi's Rai-Le beach is most fully appreciated lying at anchor, watching the sunset casting it's warm glow across the water.

Cruise from the Royal Phuket Marina to Krabi beach in air-conditioned comfort. aboard your private Sunseeker yacht who spirited performance is sure to excite. Explore the Islands & beaches and return aboard for a gourmet meal.



## Specifications

• Length	17.67 meters (58ft)	• Guest Cabins	3 (2 double, 1 Twin)
• Beam	4.64 meters (15ft 1in)	• Guest Berths	6 (overnight)
• Cruising speed	28 knots (max)	• Daytime	10
• Shipyard	Sunseeker (UK)	• Heads / WC	2
• Model	Predator 60	• TV / DVD	2
• Engines / Fuel	2 x MAN Diesel	• Sun pads	2
• Navigation	GPS Satellite plotter	• Yachts tender	25 hp Inflatable

### Itinerary:

- Pick up from your Hotel / Villa
- Transfer to yacht
- Cruise to Krabi area
- At Leisure to explore beaches / swim
- Cruise to another Island / Beach
- Gourmet meal at anchor
- Peaceful cruise back to Marina
- Transfer back to your Hotel / Villa



**KRABI BEACH**



**KRABI BEACH**

### Included In Price

- Gourmet meals, Soft drinks & water
- Value Added Tax
- Licensed Captain, Hostess & Engineer
- National Marine Park Fees
- 4 hours cruising
- Transfer to / from your Phuket hotel
- Full range of safety equipment

### Not Included in Price

- Meals / drinks ashore
- Alcoholic drinks
- Cruising in excess of 4 hours
- Time in excess of 8 hours
- Crew gratuities