



Sea Plane Transfer

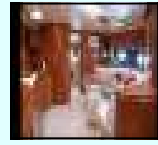
Itinerary 3002

Charter: Phi Phi Adventure



Yacht: 'MYSTERIOUS WAYS'

Phi Phi Islands have become one of the most infamous group of island destinations around 2 hours cruising from Phuket. They make a fine day trip destination from Phuket (approx 40 nautical miles from The Boat Lagoon) > Abundant opportunities exist for snorkeling and swimming in the amazing blue waters of the Andaman. Snorkeling around the archipelago's coral reefs or climbing to one of the many limestone look-outs is unforgettable. The fish and coral and other undersea life on the reefs will truly amaze you. Phi Phi Don has stunning tropical beaches along its southern and eastern shores.



Specifications

• Length	17.67 meters (58ft)	• Guest Cabins	3 (2 double, 1 Twin)
• Beam	4.64 meters (15ft 1in)	• Guest Berths	6 (overnight)
• Cruising speed	28 knots (max)	• Daytime	Max 8 (Seaplane)
• Shipyard	Sunseeker (UK)	• Heads / WC	2
• Model	Predator 60	• TV / DVD	2
• Engines / Fuel	2 x MAN Diesel	• Sun pads	2
• Navigation	GPS Satellite plotter	• Yachts tender	25 hp Inflatable



Phi Phi Islands

Itinerary:

- Pick up from your Hotel / Villa
- Transfer to yacht by Sea Plane
- Cruise around Phi Phi Islands
- At Leisure to explore beaches / swim
- Cruise to Maya Bay / Beach
- Gourmet meal at anchor
- Rendezvous with Sea Plane
- Transfer back to your Hotel / Villa



Phi Phi Islands

Included In Price

- Gourmet meals, Soft drinks & water
- Value Added Tax
- Licensed Captain, Hostess & Engineer
- National Marine Park Fees
- 4 hours cruising
- Transfer to / from your Phuket hotel
- Full range of safety equipment

Not Included in Price

- Meals / drinks ashore
- Alcoholic drinks
- Cruising in excess of 4 hours
- Time in excess of 8 hours
- Crew gratuities

SEAPLANE TRANSFER