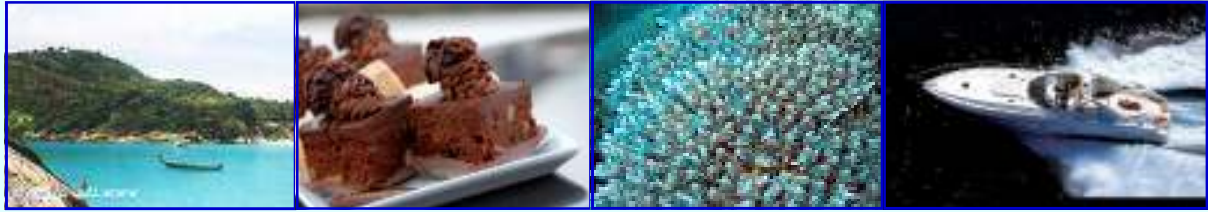


Charter Yachts Phuket

Itinerary 3010

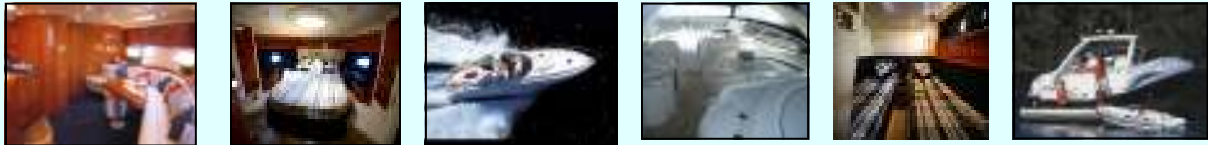
Day Dream: Clear Water Experience



The excellent snorkeling is a delight in the clear water of Koh Racha Yai. The stunning coral abounds around this secluded little known bay and beach and you will be amazed by the dazzling sea life.

Cruise from the Royal Phuket Marina in the air-conditioned comfort of your own private yacht in about two and a half hours. Enjoy the exhilarating cruise and after a swim enjoy a gourmet lunch at anchor.

If there's time visit Egg Island for a cool swim during the return cruise.



Specifications

- | | | | |
|------------------|------------------------|-------------------------|----------------------|
| • Length | 17.67 meters (58ft) | • Fully Air-conditioned | |
| • Beam | 4.64 meters (15ft 1in) | • Guest Cabins | 3 (1 double, 2 Twin) |
| • Cruising speed | 28 knots (max) | • Guest Berths | 6 (overnight) |
| • Shipyard | Sunseeker (UK) | • Daytime | 10 |
| • Model | Predator 60 | • Heads / WC | 2 |
| • Engines / Fuel | Twin Detroit Diesel | • TV / DVD | 2 |
| • Navigation | GPS Satellite plotter | • Sun pads | 2 |
| | | • Yachts tender | 25 hp Inflatable |



Koh Racha Yai

Itinerary

- Pick up from your Hotel / Villa
- Cruise to Koh Racha Yai.
- Morning snack / drinks
- Visit ashore or explore the coral
- Gourmet meal at anchor
- Cruise to Egg Island. beach / swim
- Afternoon Tea at anchor
- Cruise back to Marina



Koh Racha Yai

Included In Price

- Gourmet meals, Soft drinks & water
- Value Added Tax
- Licensed Captain, Hostess & Engineer
- National Marine Park Fees
- 4 hours cruising (from 9am to 5pm)
- Transfer to / from your Phuket hotel

Not Included in Price

- Meals / drinks ashore
- Alcoholic drinks
- Cruising in excess of 4 hours
- Time in excess of 8 hours
- Crew gratuities

Charter Yachts Phuket Co., Ltd.
Royal Phuket Marina, Phuket, Thailand

Tel: 076 360876 M. 087 999 3374
e-mail : Info@CharterYachtsPhuket.com

REGISTERED WITH TAT (Tourism Authority of Thailand)

www.CharterYachtsPhuket.com